

NYSSMA Sight Reading Level:IV

1. Time Signature: 4/4, 2/4, 3/4

2. Range: Octave (Usually Do to Do)

3. Intervals: Do-Mi-Sol (Ascending on quarter notes)

Do-Sol (Ascending on quarter notes)

4. Rhythms: Half notes (), Quarter notes (), and Eighth notes ()

5. Rests: Quarter rest ()

1.



mf

5



f

2.

9



mf

13



p

3.

17



mf

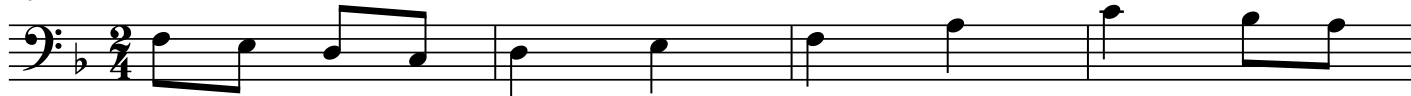
p

21



4.

25



f

29



p

5.

33

37 *mf*

p

Detailed description: Exercise 5 consists of two staves of music in bass clef, key of D major, and 3/4 time. The first staff contains measures 33-36, starting with a quarter rest followed by quarter notes D4, E4, F#4, G4, A4, B4, C5, and a half note D5. The second staff contains measures 37-40, starting with a quarter note D4, followed by quarter notes E4, F#4, G4, A4, B4, C5, and a half note D5. Dynamic markings include *mf* at the start of the second staff and *p* below the first staff.

6.

41

f

45

mf

Detailed description: Exercise 6 consists of two staves of music in bass clef, key of D major, and 3/4 time. The first staff contains measures 41-44, starting with a quarter note D4, followed by quarter notes E4, F#4, G4, A4, B4, C5, and a half note D5. The second staff contains measures 45-48, starting with a quarter note D4, followed by quarter notes E4, F#4, G4, A4, B4, C5, and a half note D5. Dynamic markings include *f* below the first staff and *mf* below the second staff.

7.

49

mf

53

p

Detailed description: Exercise 7 consists of two staves of music in bass clef, key of B minor, and 4/4 time. The first staff contains measures 49-52, starting with a quarter note B3, followed by quarter notes C4, D4, E4, F4, G4, A4, B4, and a half note C5. The second staff contains measures 53-56, starting with a quarter note B3, followed by quarter notes C4, D4, E4, F4, G4, A4, B4, and a half note C5. Dynamic markings include *mf* below the first staff and *p* below the second staff.

8.

57

p

61

f

Detailed description: Exercise 8 consists of two staves of music in bass clef, key of B minor, and 2/4 time. The first staff contains measures 57-60, starting with a quarter note B3, followed by quarter notes C4, D4, E4, F4, G4, A4, B4, and a half note C5. The second staff contains measures 61-64, starting with a quarter note B3, followed by quarter notes C4, D4, E4, F4, G4, A4, B4, and a half note C5. Dynamic markings include *p* below the first staff and *f* below the second staff.